

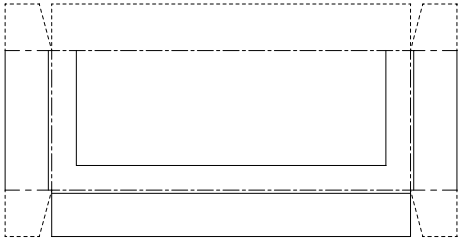
ペーパークラフト 98

釧路港船舶通航信号所・釧路埼灯台

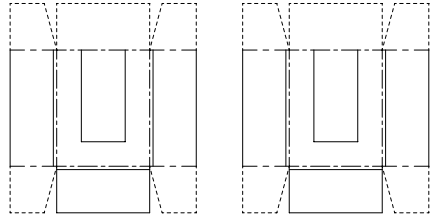
S, 1 : 100



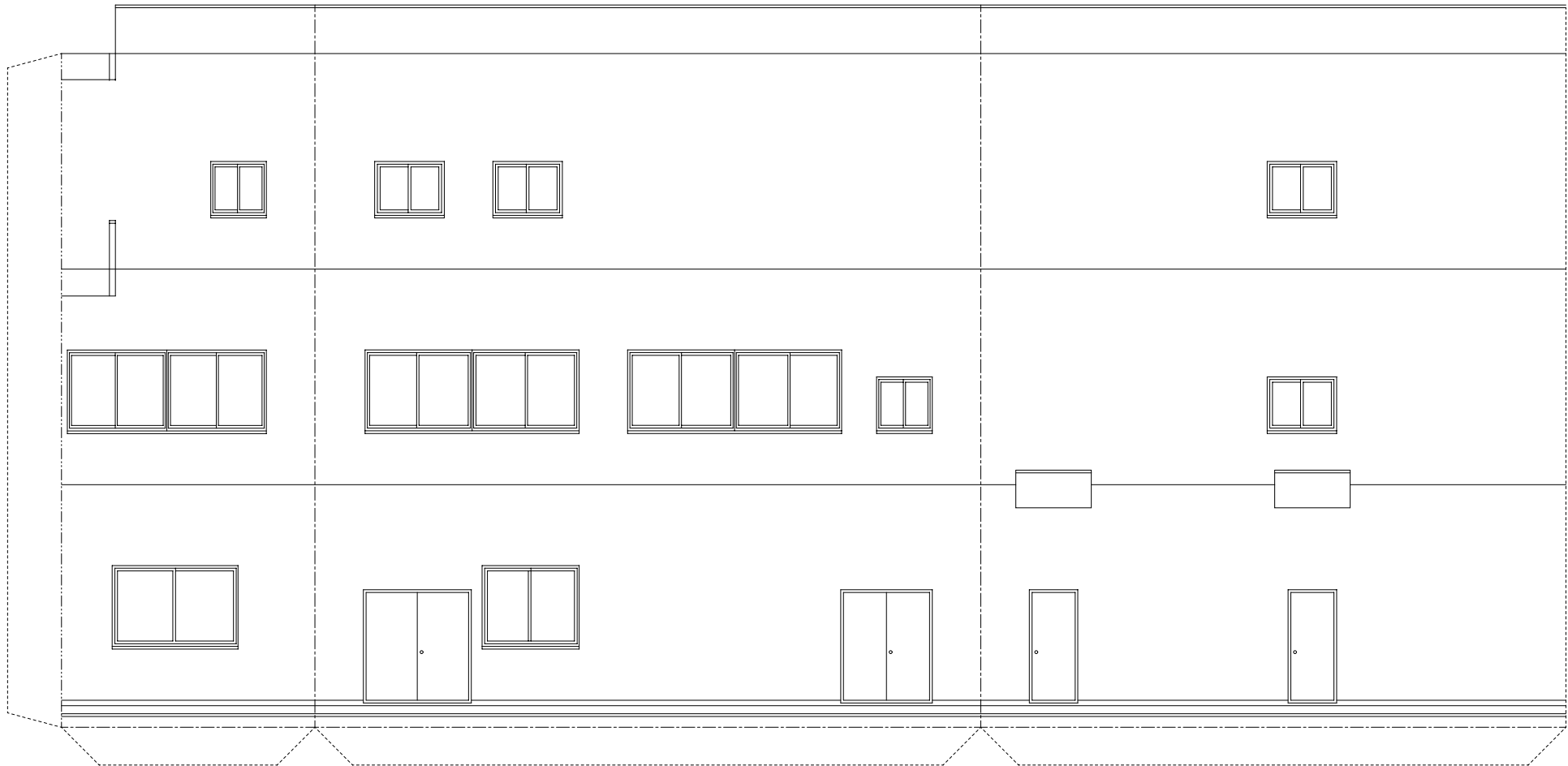
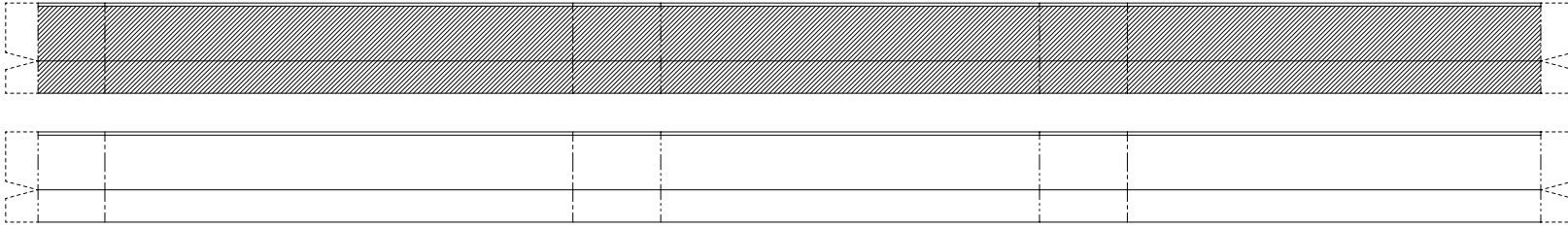
玄関屋根

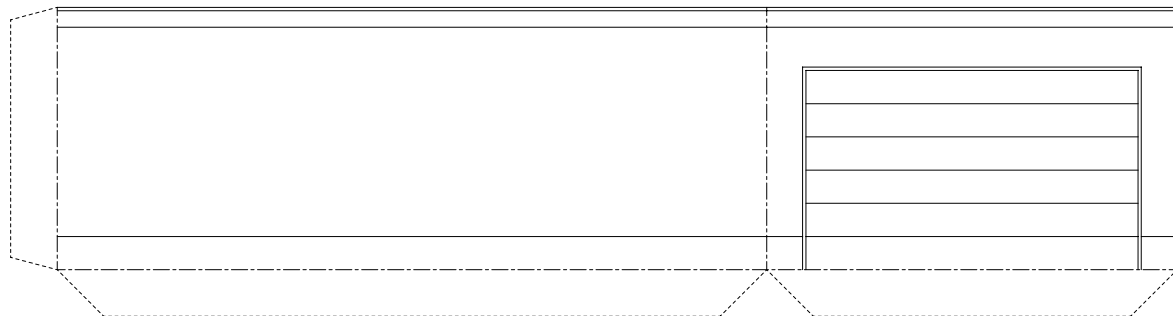
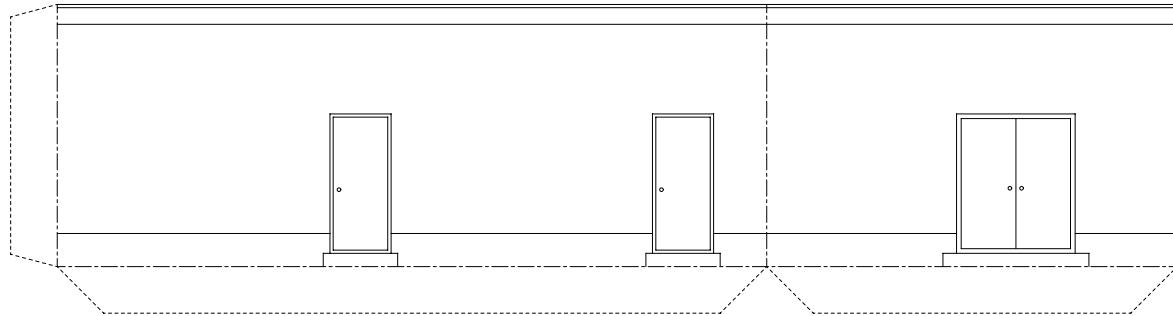
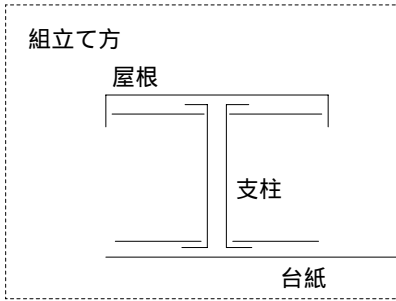
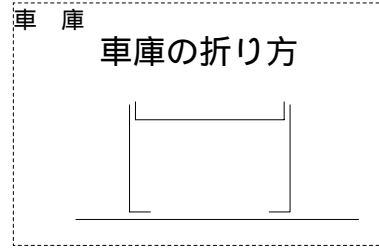
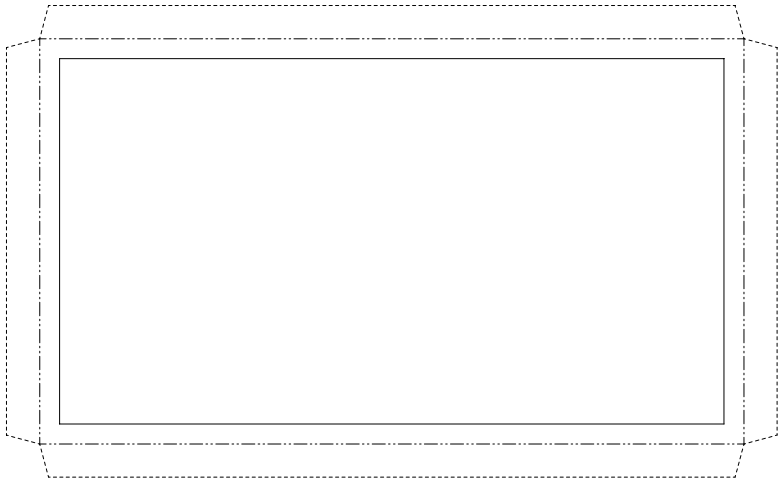


車庫通路屋根

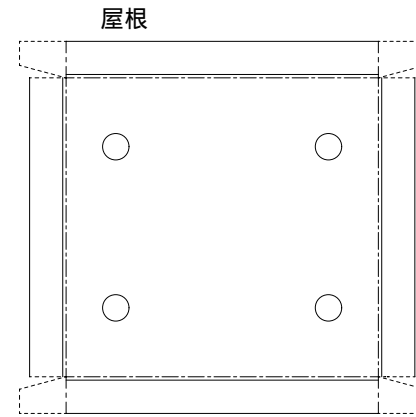


テラスの手すり

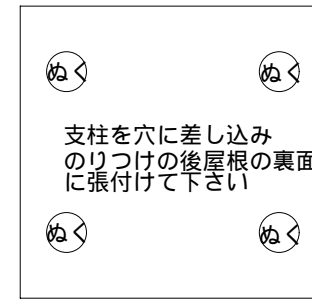




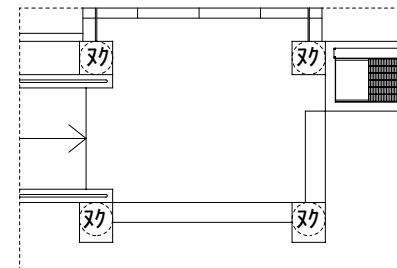
ポーチ



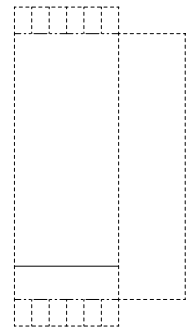
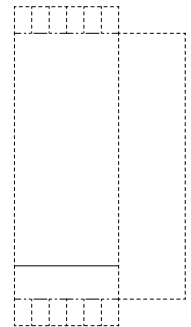
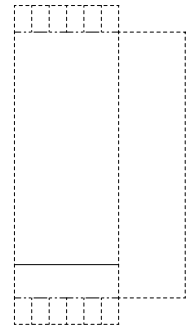
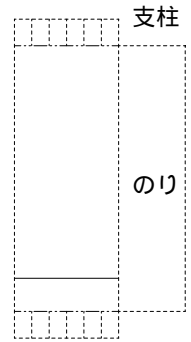
支柱カバー（屋根）



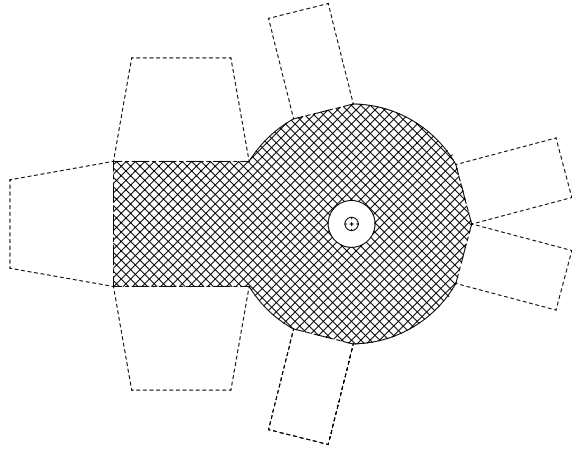
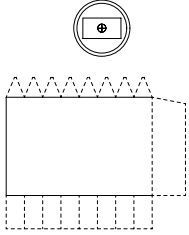
支柱カバー（台紙）



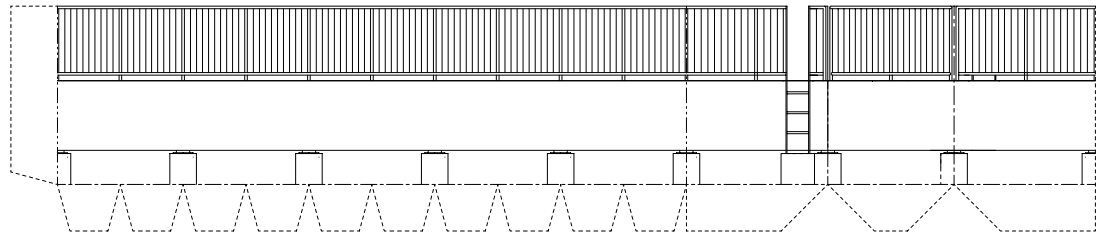
支柱を穴に差し込みのりつけ後
台紙に張付けて下さい



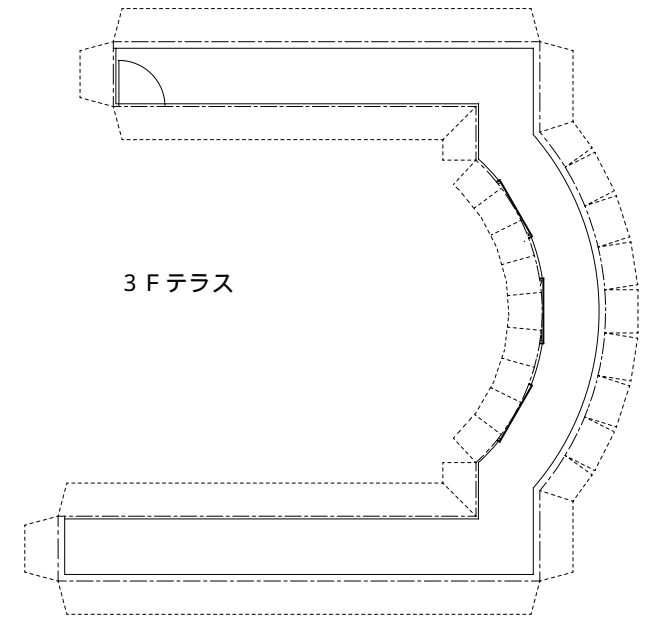
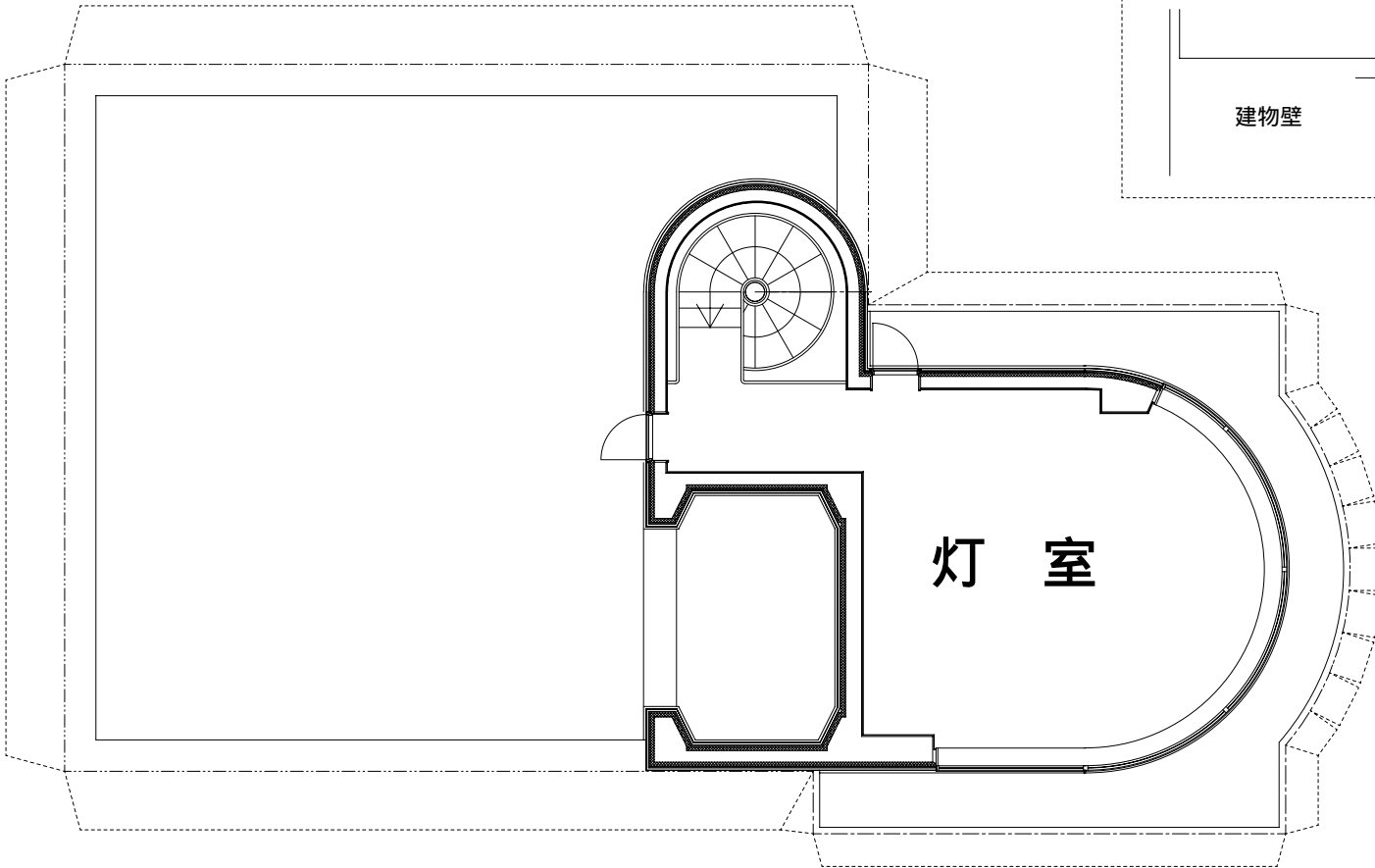
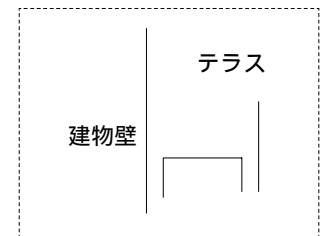
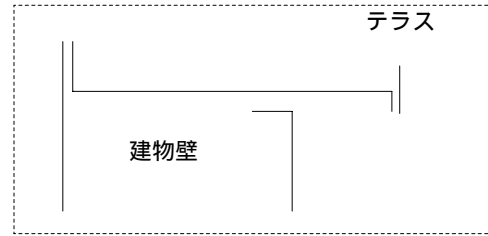
レーダ-取付台



レーダ-点検台



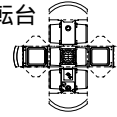
組立て方



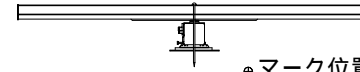
レーダー-本体



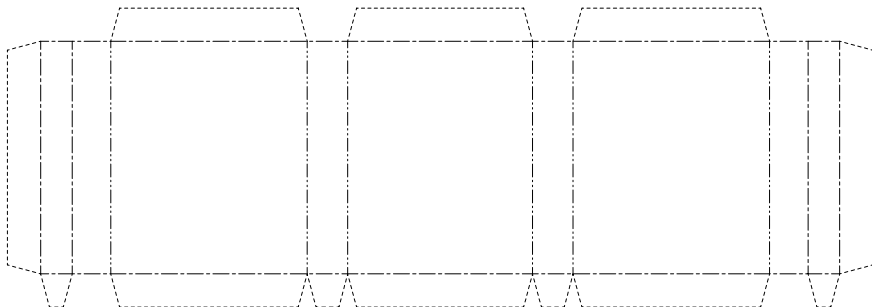
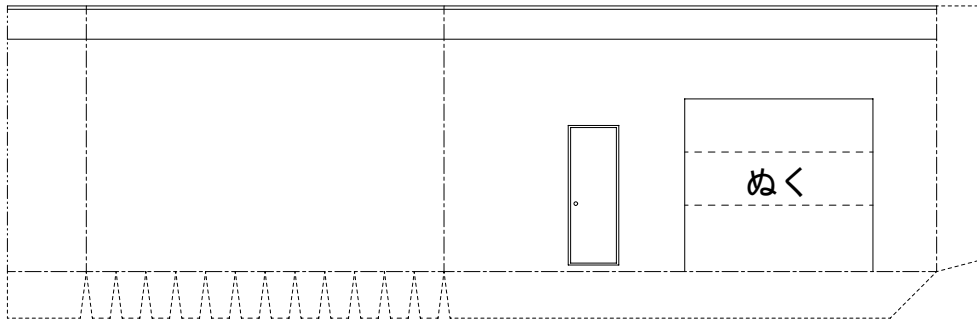
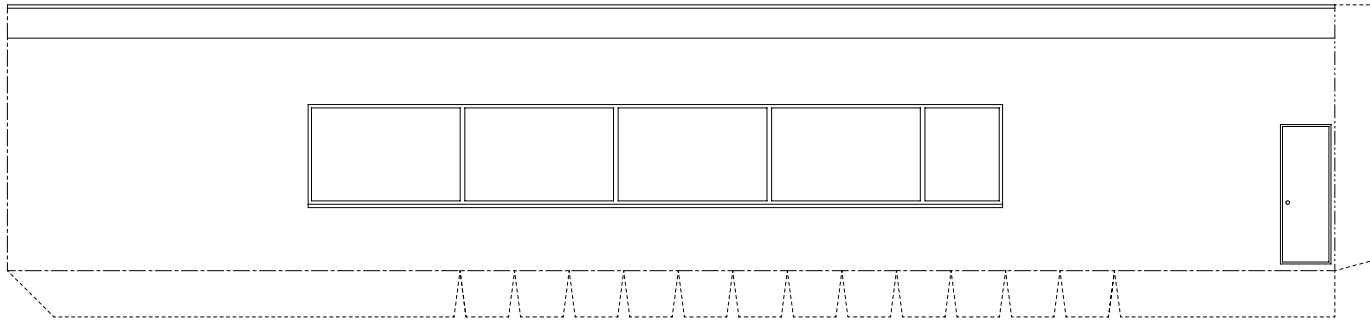
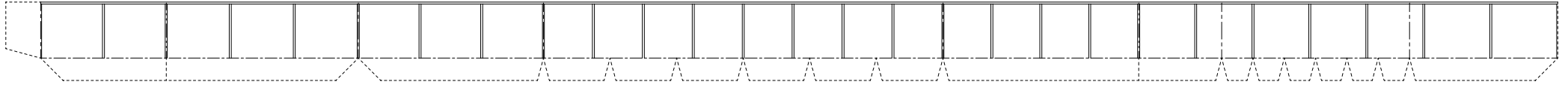
回転台



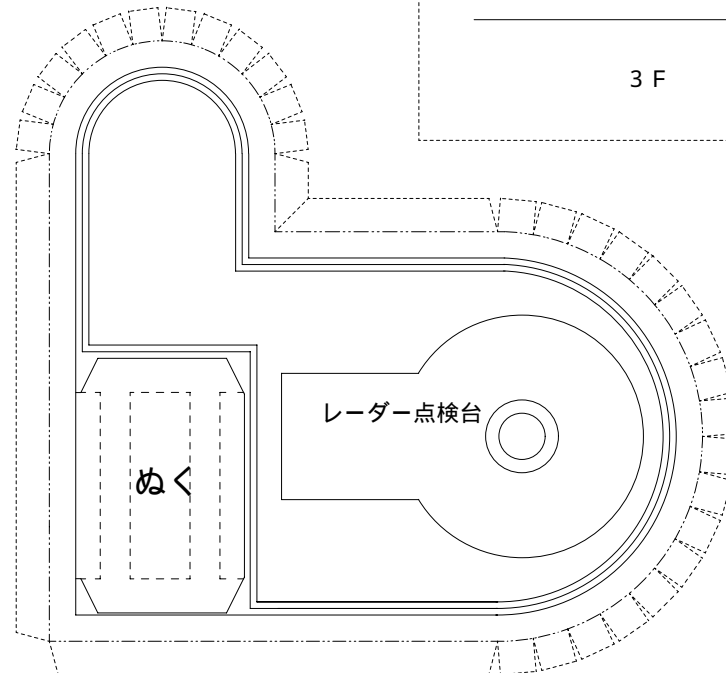
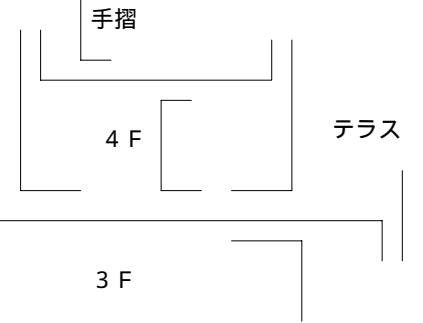
ムシピンをレーダー、回転台、取付台の中心に通す



●マーク位置に前もってムシピンで穴を開けておく



組立て方



レーダー点検台

